

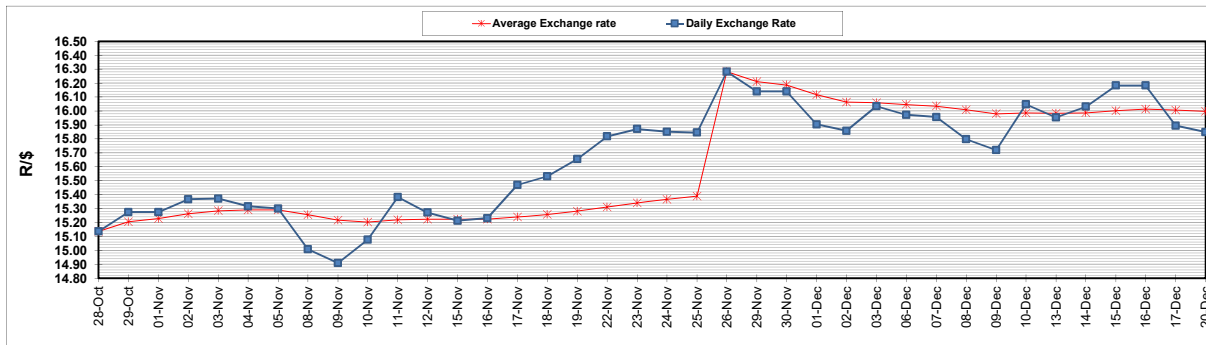
	PETROL 95 ULP	PETROL 93 ULP & LRP	DIESEL 0.05%	DIESEL 0.005%	ILL. PAR.
GAUTENG PUMP PRICE (SA c/l) AS FROM 01/12/2021	2,029.000	2,007.000	-	-	-
WHOLESALE PRICE (SA c/l) AS FROM 01/12/2021	-	-	1,792.480	1,797.880	1,167.688
SINGLE NATIONAL MAXIMUM RETAIL PRICE	-	-	-	-	1,489.000
BASIC FUEL PRICE - 20/12/2021 (SA c/l)	861.634	849.572	839.948	842.359	832.413
PRESS RELEASE CONTRIBUTION TO BFP 01/12/2021 - 20/12/2021 (SA c/l)	973.670	961.670	955.630	961.030	946.128
UNIT OVER/(UNDER) RECOVERY - 20/12/2021 (SA c/l)	112.036	112.098	115.682	118.671	113.715
AVERAGE BASIC FUEL PRICE 26/11/2021 - 20/12/2021	887.966	871.925	873.093	876.903	864.812
AVERAGE UNIT OVER/(UNDER) RECOVERY 26/11/2021 - 20/12/2021	79.253	83.293	75.831	77.068	75.316

ANALYSIS MOVEMENT OF AVERAGE OVER/(UNDER) RECOVERY

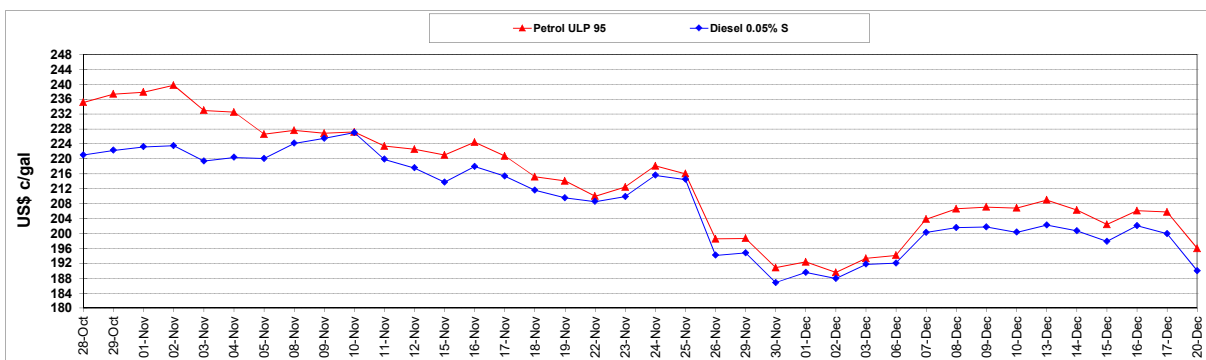
	PETROL 95	PETROL 93	DIESEL 0.05%	DIESEL 0.005%	ILL. PAR.
- MOVEMENT IN INTERNATIONAL PRODUCT PRICES	112.979	116.411	108.994	110.375	108.164
- MOVEMENT IN EXCHANGE RATE	(33.727)	(33.118)	(33.163)	(33.307)	(32.848)
AVERAGE UNIT OVER/(UNDER) RECOVERY 26/11/2021 - 20/12/2021	79.253	83.293	75.831	77.068	75.316

R/\$ EXCHANGE RATE - (R/\$15.8475 - 20/12/2021)

EXCHANGE RATE USED IN BASIC FUEL PRICE



INTERNATIONAL PRODUCT PRICES OF BASKET USED IN BASIC FUEL PRICE



BASIC FUEL PRICE IN SA CENTS PER LITRE

